

Hampton Bays UFSD

2010-2011 Budget Presentation

April 14, 2011

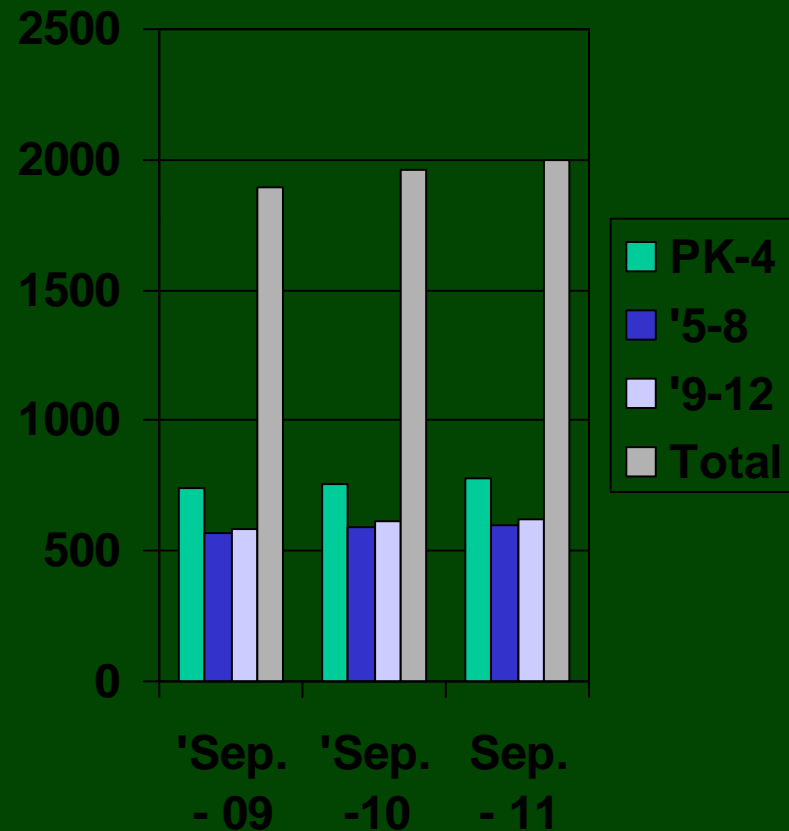
BOE Budget Adoption

Budget Topics

- Enrollment
- Proposed Budget
- Estimated Tax Impact
- Dates to Remember
- Questions

Hampton Bays Enrollment

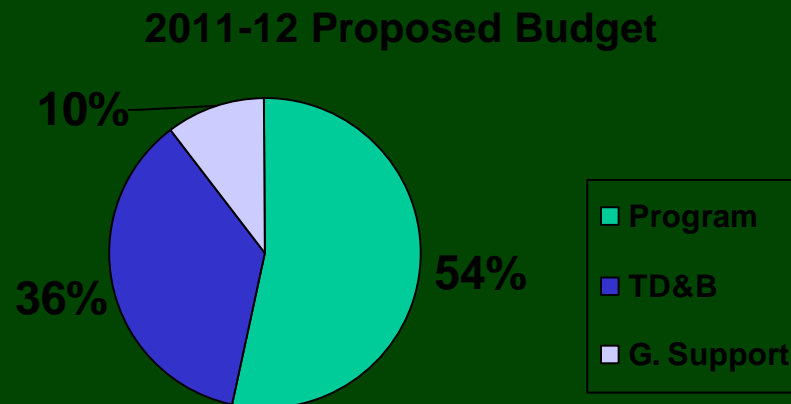
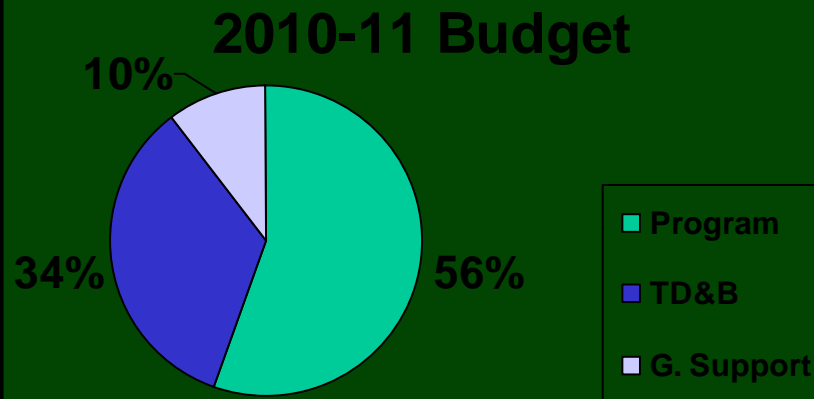
- September 2009 PK-12 is 1,852 students.
- September 2010 PK- 12 is 1,964.
- Future projections show 2% continued growth, each year, anticipate 2,002 students.
- Our current KG class is 155. We already have 161 KG enrolled for September.



2011-2012 Proposed Budget

- \$44.9 million about \$1.1M increase.
- An increase of 2.6% Budget to Budget versus 2010-11.
- Smallest budget increase in more than 10 years.

Budget Breakdown



- Program and Instruction decrease by 1.0% to \$24m. Due to Retirements and Staff Concessions.
- Transportation, Debt & Benefits increase by 8.7% to 16.3m.
- General Support increases by 1.2% to \$4.6m.

Major Changes

Increase Budget

- Health Insurance increase of \$571K
16%
- Pension costs increased \$723K
almost 42%
- Almost \$1.3M in these two major areas

Saved Money

- Retirements in 2010 save \$391K in salary
- Special Education Restructuring saved \$250K
- Working with staff to increase efficiency, do more and ask for less – **PRICELESS!**

How We Compare

Comparing School Districts In The Town of Southampton 2011 - 2012

	2010-11	2010-11	District Size	2011-2012
	Approx Tax Rate	Approx #	Sq. Miles	Proposed
District	Per \$1,000	Students		Budget Increase
Bridgethampton	\$ 1.41	170	u/k	5.83%
Sag Harbor	\$ 4.68	895	14.4	5.48%
Quogue	\$ 1.81	120	6.1	3.56%
Tuckahoe	\$ 6.25	543	11.7	3.50%
East Quogue	\$ 9.13	800	10.7	2.95%
West Hampton	\$ 5.31	1,806	18.2	2.84%
Hampton Bays	\$ 10.71	1,979	16.7	2.61%
Southampton	\$ 2.22	1,632	35.7	2.12%
Riverhead	\$ 12.35	4,727	u/k	1.26%

Tax Levy

- Under the proposed budget, the tax levy will increase by \$2.0 million or 5.2%.
- About 2% of this increase is due to \$640,294 in state aid decrease since August 24, 2010.
- Without state aid cuts we would be looking at a tax levy increase of 3.2%.

Estimated Tax Rate

- With a tax levy of \$40.7 Million the tax rate is estimated to be \$11.35 per \$1,000 assessed value or about a 5.9% increase.
- We are told that tax assessments will be relatively unchanged this year. Possibly falling by $\frac{1}{2}$ %.

Proposed Budget Tax Impact

- The average single family home in Hampton Bays is assessed at \$450,000.
- The average single family home will see the school property taxes increase by \$287 for next year if the budget passes.

Dates to Remember

- Budget Hearing, May 3
- Community Leaders' Forum on Education, May 10
- Last Day to Register, May 12
- Community Pride Day, May 14
- Budget Vote, May 17